

# Learning Photoshop Elements

## Step-by-step

### Lesson Two

## Layers and Shapes

- Overview

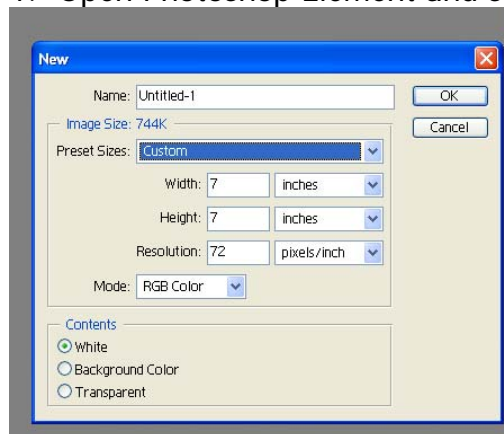
The power and flexibility of Photoshop lies in its layers.

Before students get started using Elements in integrated projects, they need to learn how to use the Layer pallet and the Layer tools.

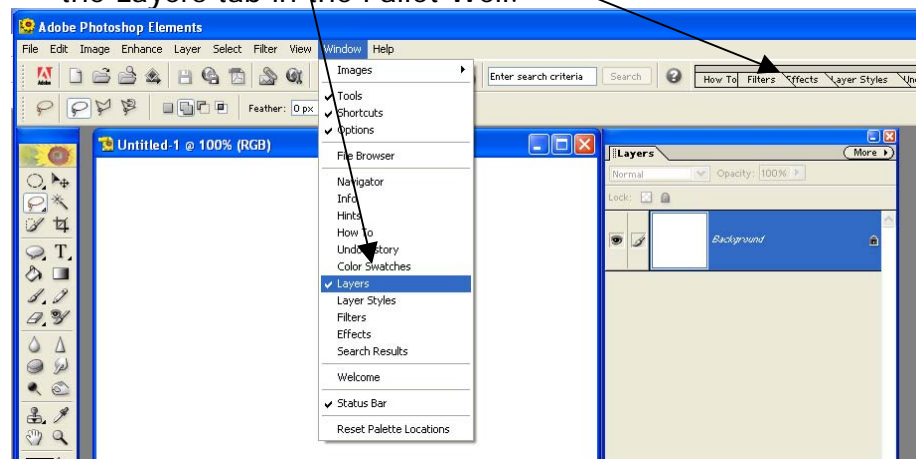
This lesson will offer a step-by-step project that will have your students mastering the art of layers in a very short time.

- Instructions

1. Open Photoshop Element and set up a canvas as below:

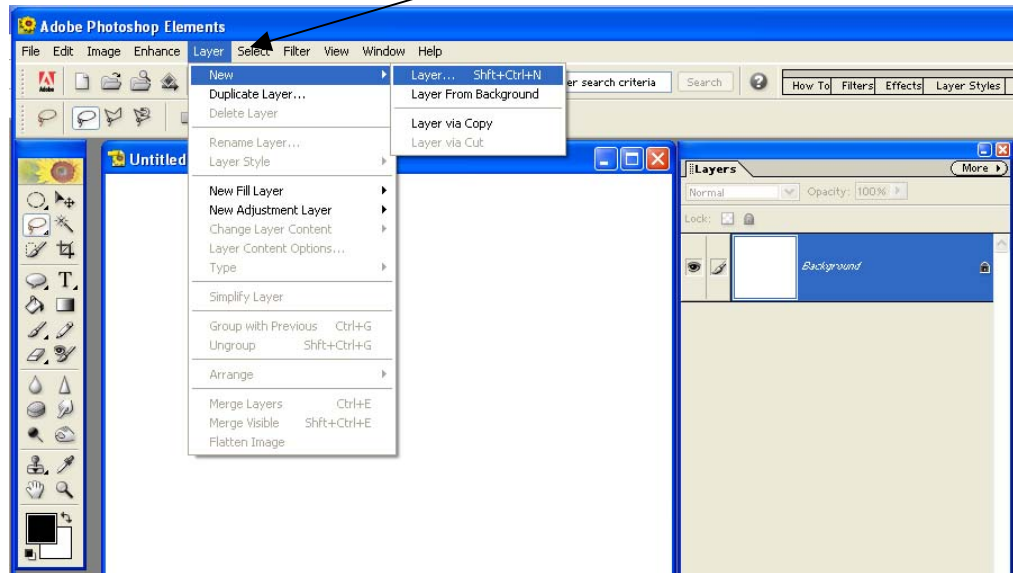


2. To begin, set up your Layers pallet. To open this click on Window>Layers. You can also access the Layer pallet by locating the Layers tab in the Pallet Well.

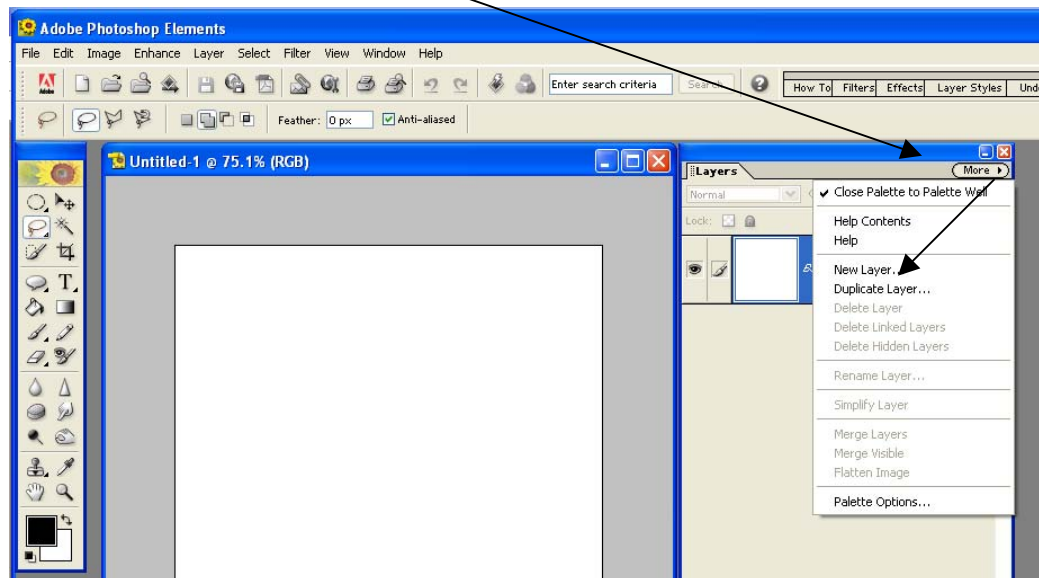


Notice the Layers Pallet always starts with a layer called, "background".

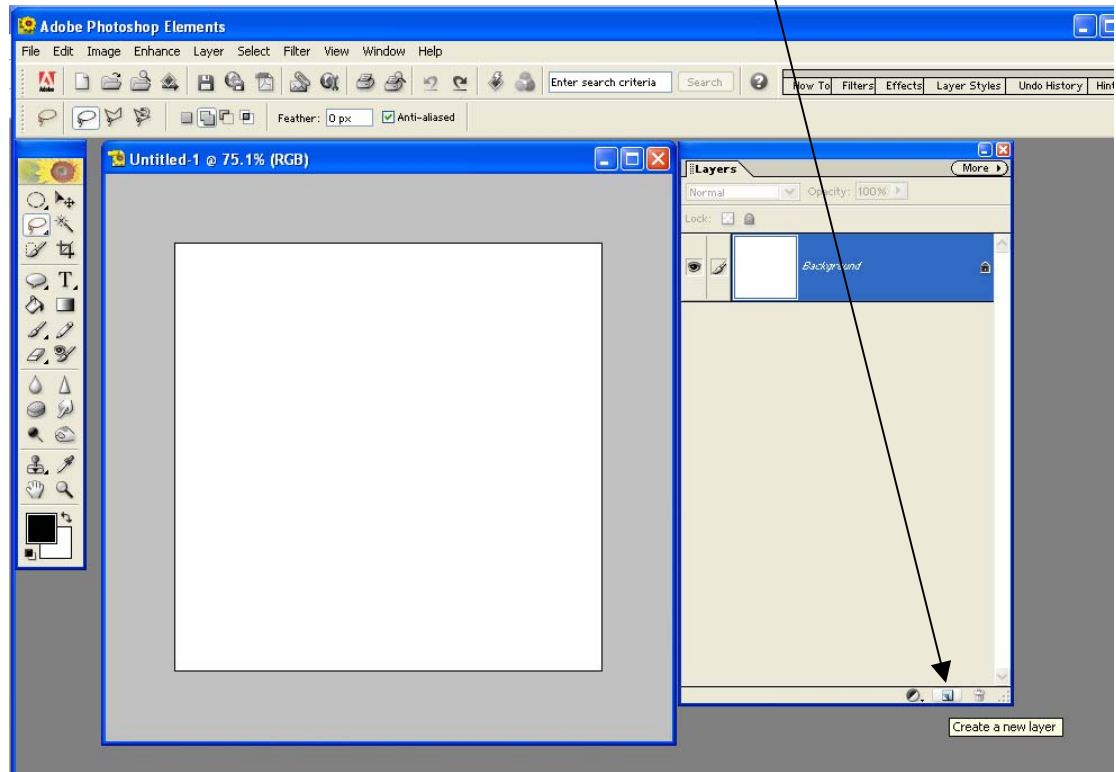
3. Our first step is to create a new layer. Because the background layer that Elements creates is locked it is a good idea to keep your background layer blank. That way any layer you create can be edited or deleted easily. There are several ways to create a new layer. One way is to click on Layer>New Layer:



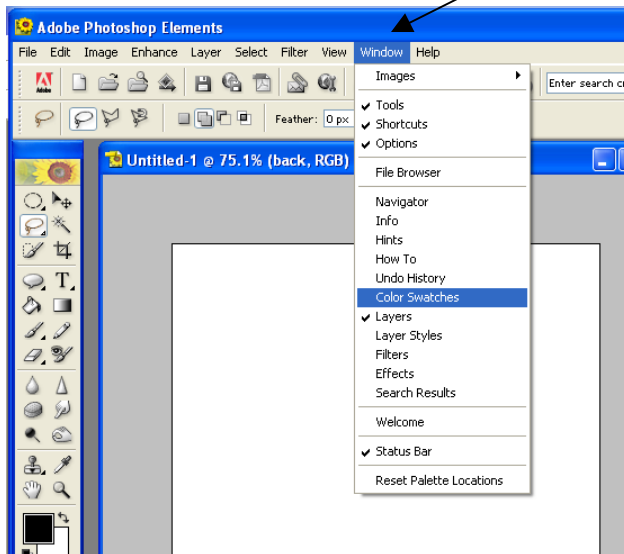
Another way is to click on the "More" button on the Layers Pallet and select "New Layer".



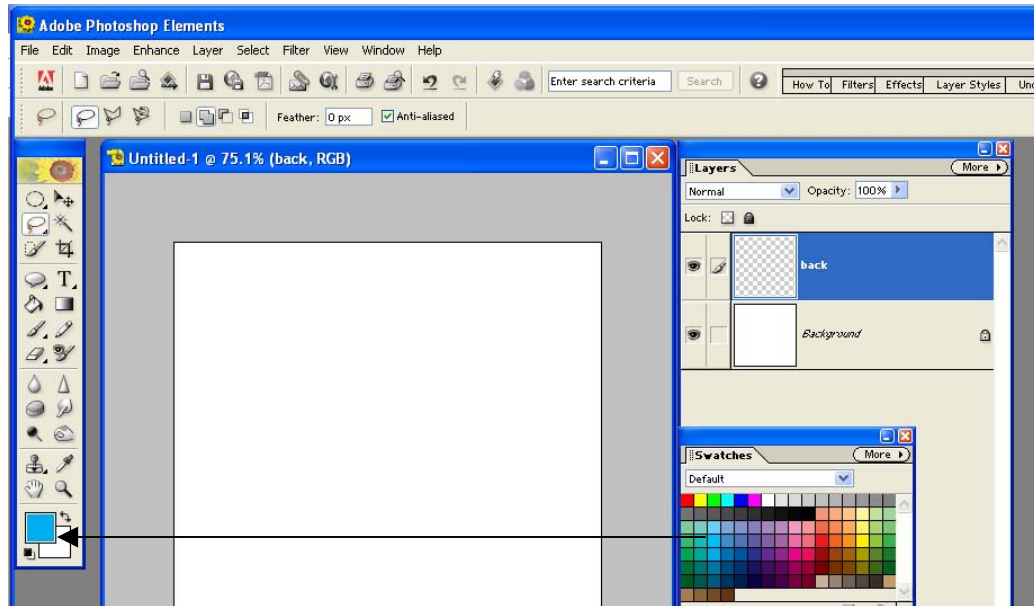
A third way is to select this icon on the Layers Pallet



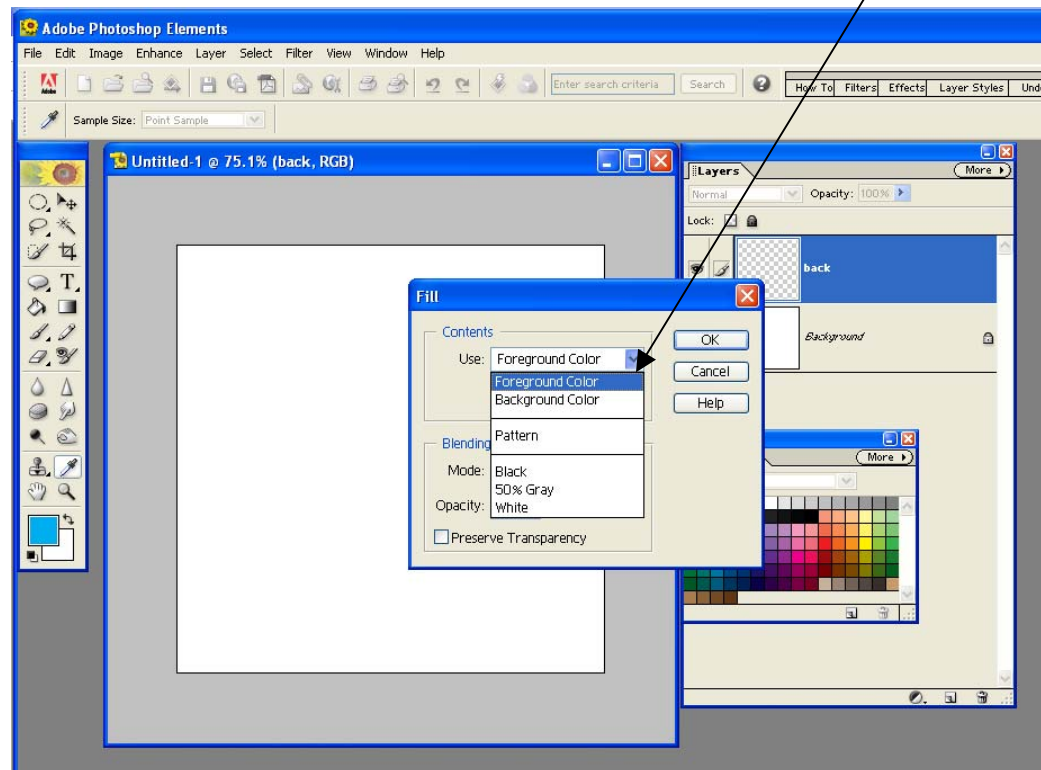
4. When you create your first layer, name it "back". To name, or change the name of a layer, simply right click on the layer you are working with and select "Rename Layer". Now let's open the Swatches Pallet so we can select a color for our background. Click on Window>Color Swatches:



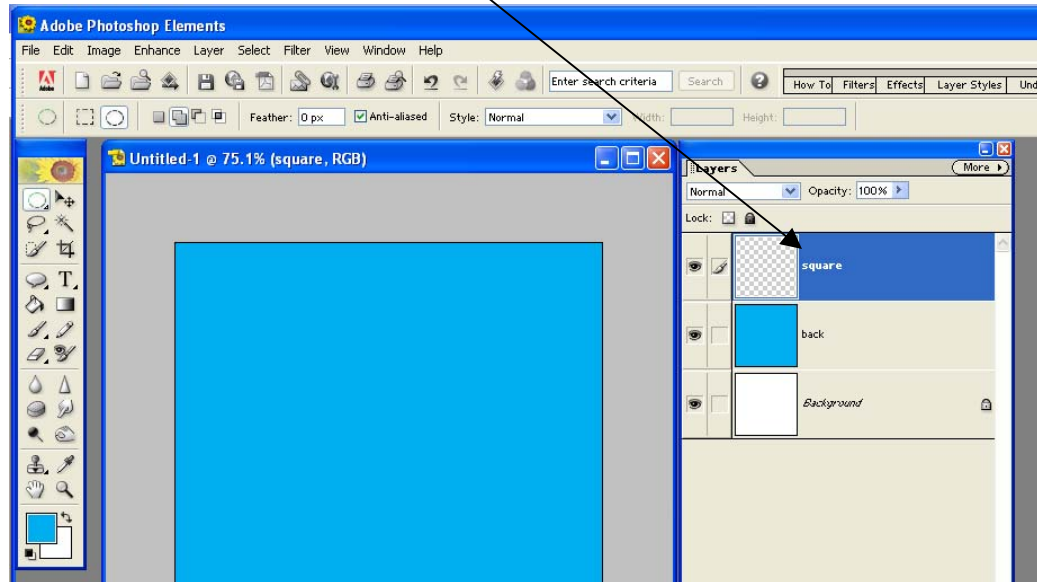
5. Select a color from your Swatches Pallet. You will notice that color will now appear as your foreground color:



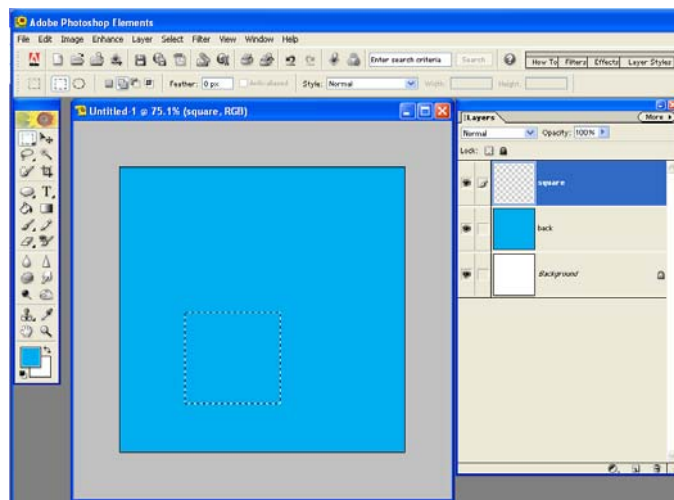
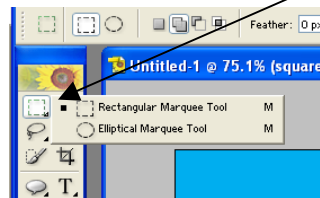
6. To set that color as your background, click Edit>Fill, and select "Foreground" color:



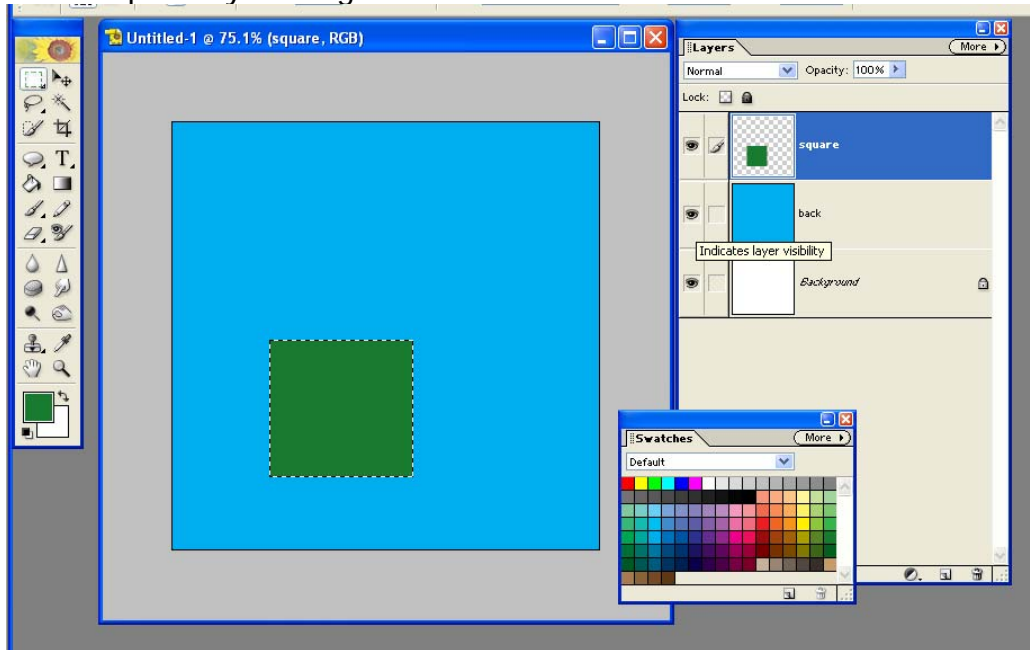
7. Using one of the three methods mentioned earlier, add another layer and call it "square":



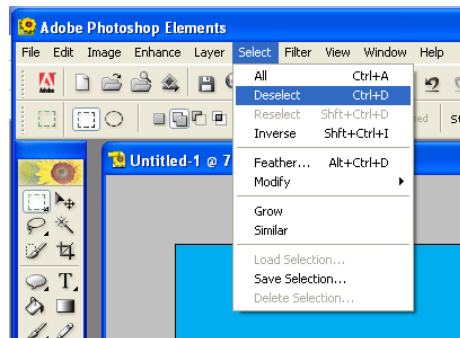
8. Select the Rectangular Marquee tool and draw a square on the canvas.



9. Select a new color from your Swatches Pallet. Fill in the color of the square by clicking Edit>Fill.



10. Deselect you square selection before we move on by clicking Select>Deselect:

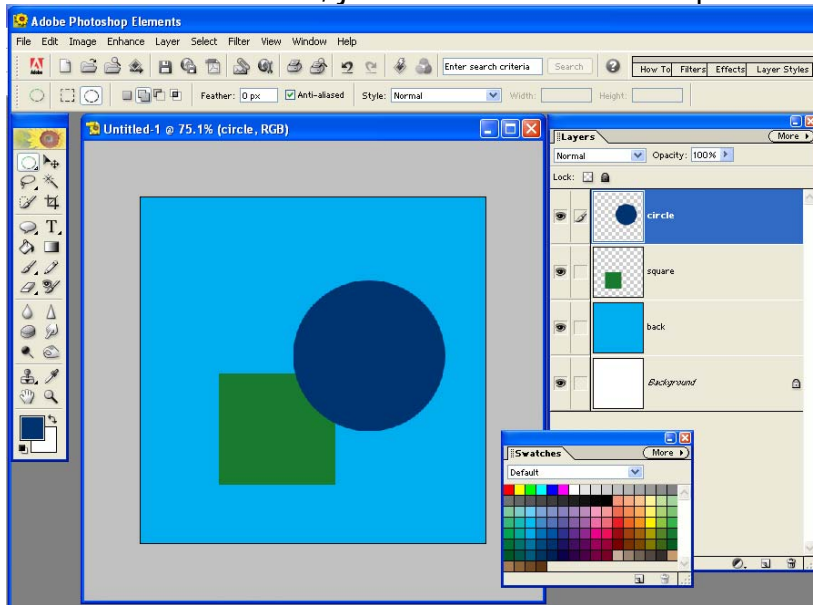


11. Add a new layer and call it "Circle"

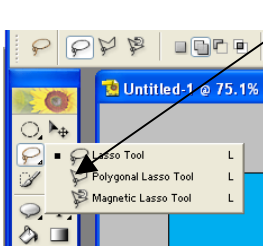


To make a circle, select the Elliptical Marquee Tool and hold down the "shift" key while you draw your circle shape.

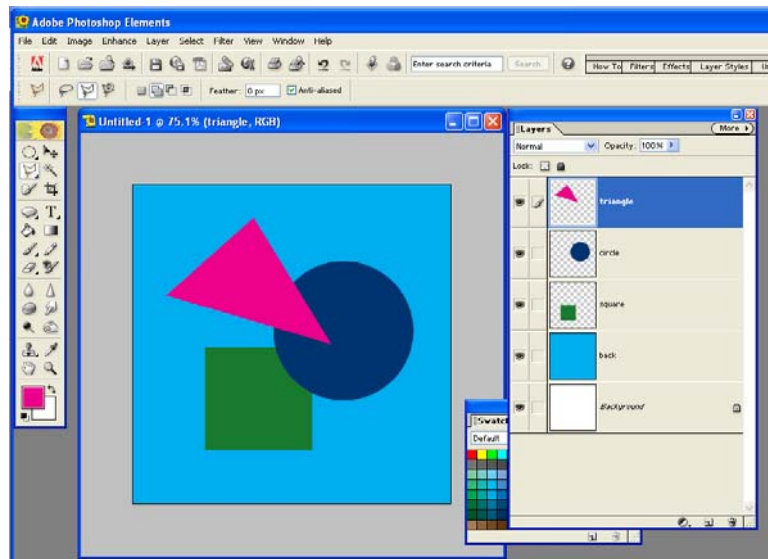
12. Select a new color on your color swatch, draw your circle, and then deselect it, just as we did with the square.



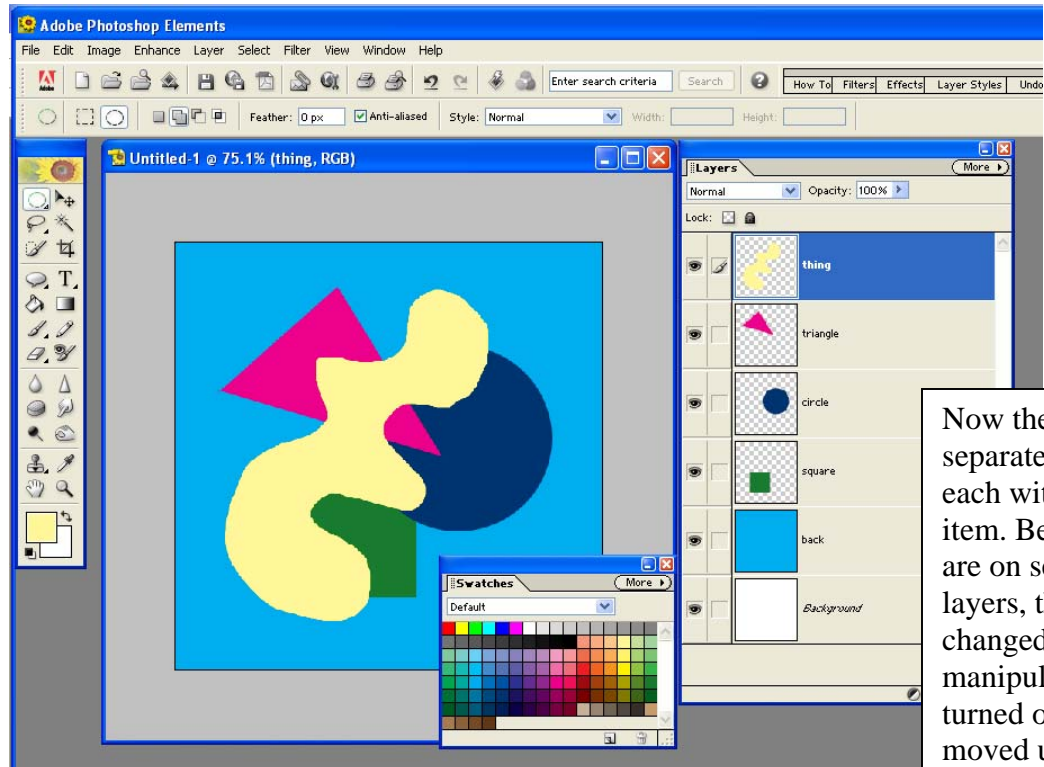
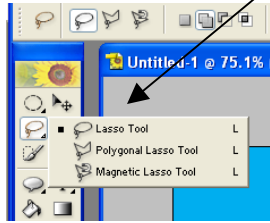
13. Make a new layer and call it Triangle. To make a triangle, select the Polygonal Lasso Tool. Select a new color and fill your triangle.



Click the mouse each time you want to change direction. Always start and end near the same spot, and if the mouse seems to “stick” on your arrow like a spider web, simply double click your mouse.

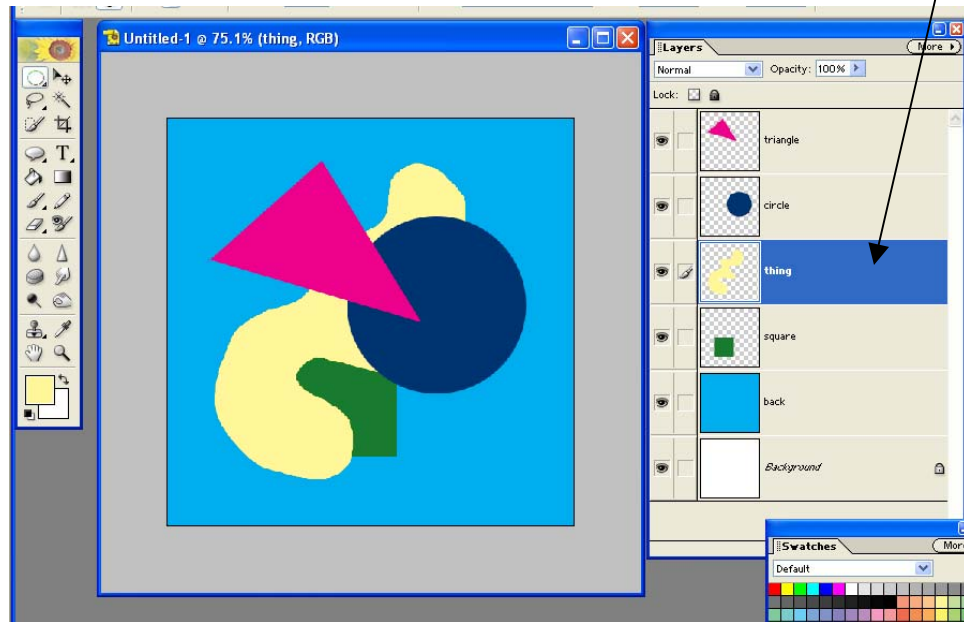


14. Make one more new layer and call it "Thing". Draw your free form "thing" using the Lasso tool. Select a new color and fill in your "thing"



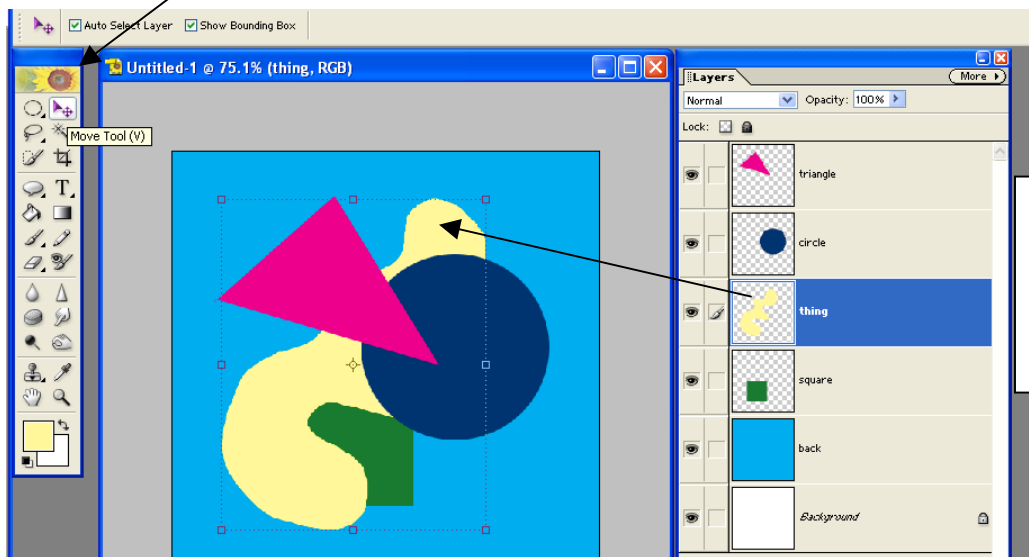
Now there are 6 separate layers, each with one item. Because they are on separate layers, they can be changed and manipulated, turned off and on, moved up or down in order or even deleted completely.

15. Try dragging the "thing" layer so it is below the circle layer:

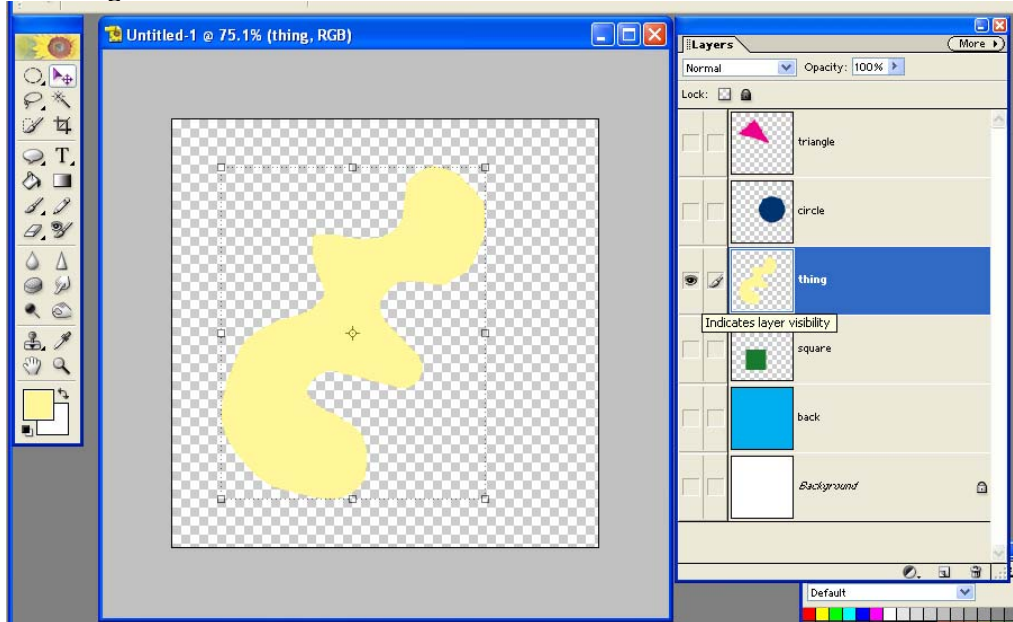


Notice that you now see the "thing" below the triangle and circle on the canvas, but above the square, just how it is represented on the layer pallet.

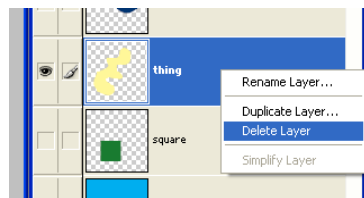
16. Not only can items be moved in their relation to each other on the canvas, but they may also be moved, enlarged, made smaller or tilted. Simply click on the "Move" tool to access the editing "handles". To exit the "handles" select a new tool from the toolbar.



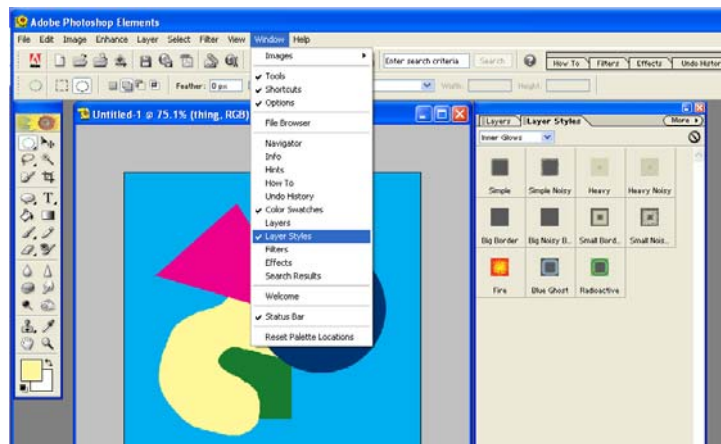
17. If you wish work on one layer at a time without seeing the additional layers, you can turn off the layer by clicking on the “eyeballs” to the right of the layers. Turn them back on by clicking them again.



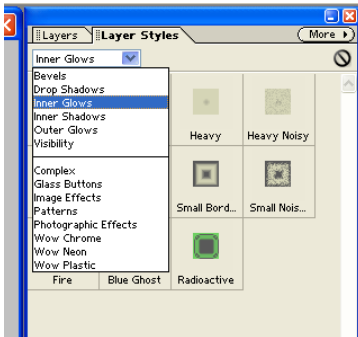
18. If you are sure you want to remove or delete a layer, right click the layer and click “Delete”.



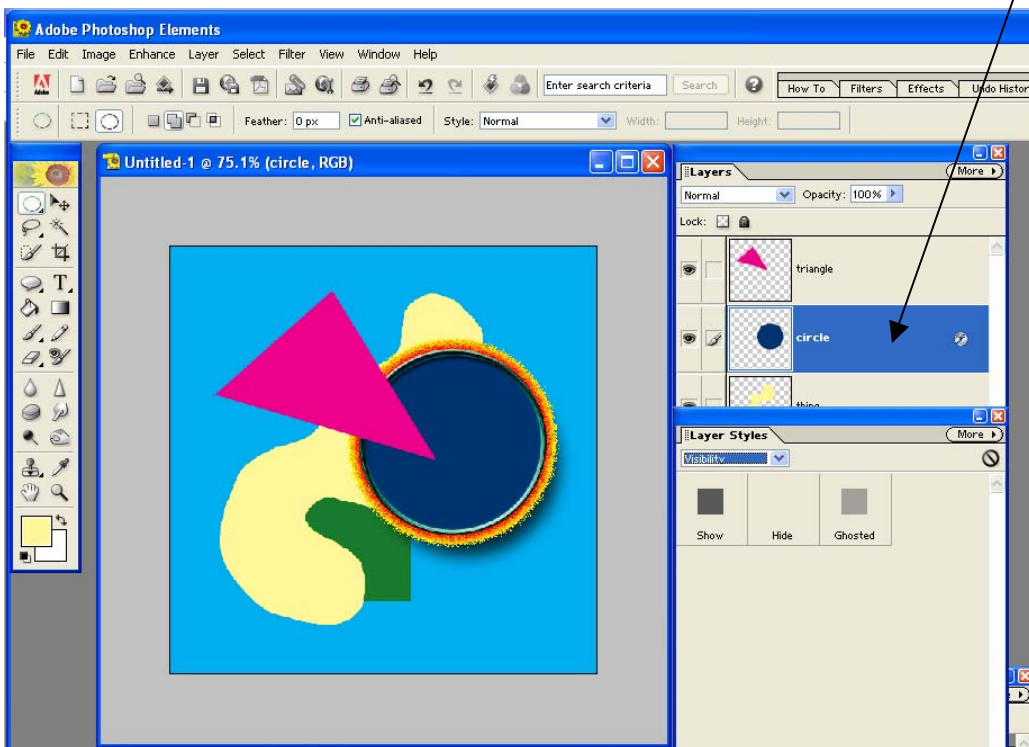
19. Practice making changes to your shapes.
20. Add some layer styles to your shapes. To access the Layer Styles Pallet, find it in the Pallet Well or click Window>Show Layer Styles.



In the Layer Styles Pallet, the drop down menu provides great options like bevels and drop shadows.



Try applying a few of these options to each of your shapes. Remember you need to access each layer separately. In other words, if you want to apply styles to your circle, your circle layer must be "active" or blue:



## 21. Finished Product!

